

# Learning from the Family Safeguarding Journey

Angela Clarke & El Mayhew  
Hertfordshire County Council



**The Centre for Family  
Safeguarding Practice**



**Hertfordshire**

1

Multi-disciplinary team

2

Motivational Interviewing

3

Workbook

4

Family Programme

5

Family Safeguarding Supervision



# Helping families and safeguarding children is a shared endeavour



Multi-disciplinary teams co-located; sharing responsibility for assessments and decision-making



Children's and adult's workers providing actual help and support to meet needs in the family



Using a shared practice methodology of supporting change



Shared governance and holding each other to account



Families as partners

Up to



50%  
reduction  
in children needing a  
Child Protection Plan

Up to

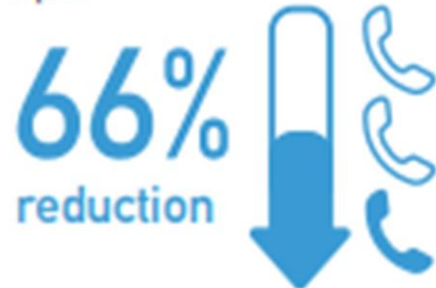


50%  
fewer  
children needing to  
come into care



Overwhelming support  
for the model from  
the workforce

Up to



66%  
reduction  
in repeat police call outs to  
domestic abuse incidents



Cost avoidance in the  
first year; exceed annual  
delivery costs within  
two years



Extremely positive  
feedback from families



## Sharing information isn't enough

- We know that poor mental health, substance use, abusive behaviour and criminality are the main factors that lead to children being harmed – no one profession has skills to tackle that
- Need to differentiate between parents who need help and those who derive satisfaction from harming children - more likely to do this as part of multi-disciplinary team
- Who has responsibility to do what with information we receive? We have to share responsibility as a team for making decisions when it comes to assessing the likelihood of harm to children
- We need a strong focus on the skills to support change – not traditionally taught in social work education



# The independent review of children's social care

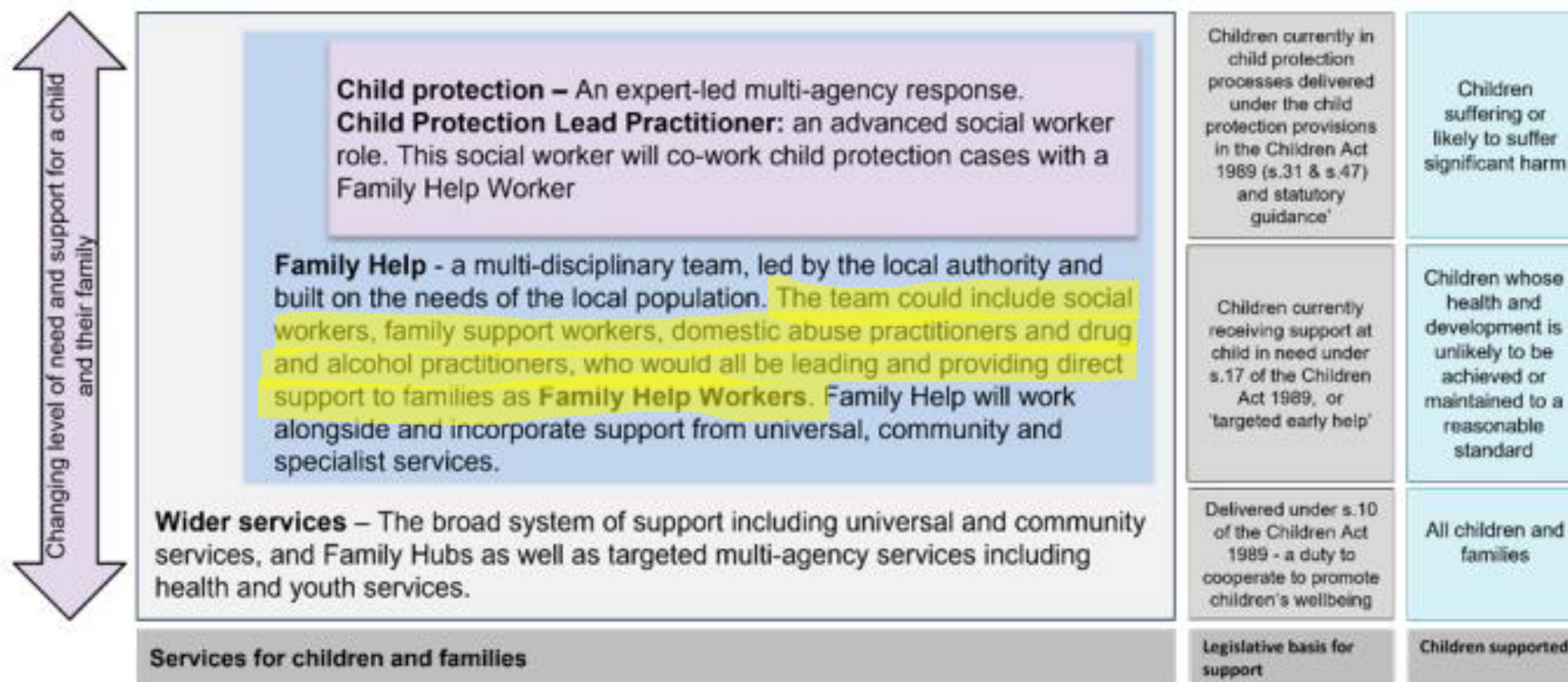


Figure 1: A diagram showing how Family Help will work with wider services (descriptive text follows this)



# Multi-Agency Partnership



“Successful outcomes for children depend on strong partnership working between parents/carers and the agencies working with them, and a child-centred approach to meeting the needs of the whole family.”

[Draft Working Together to Safeguard Children 2023](#)



# Challenges and Successes

- Short term funding for set up alone, not sustaining the approach
- No compulsion for partners to commit to MDTs, including in revised Working Together 2023
- Apparent lack of cross-governmental governance and commitment to integrated MDTs
- Enhanced assessments
- More accurate and informed decisions
- Improved outcomes for families
- Fewer children needing care
- More resources used on help not investigation and care

# Family Safeguarding - what next?

- Stable Homes, Built on Love
- Different configurations of MDT teams – Family Help and Specialist Child Protection
- Dove-tailing Family Safeguarding and Supporting Families (targeted early help)
- MI across a wider partnership workforce
- Localisation – unlocking the potential of family **and community**